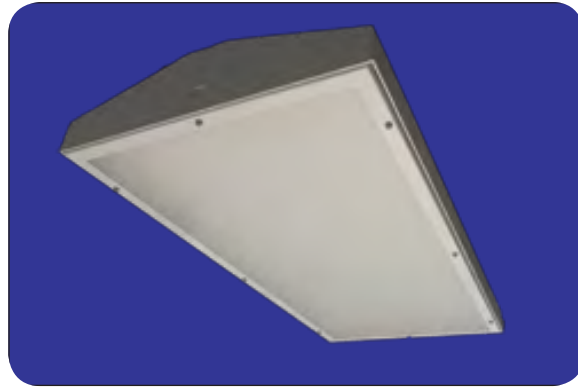


WFH Series LED



Features

- Replaces up to 400 watt Metal Halide
- Color Temperature: 5,000 CCT (K)
- CRI: >75
- 60,000 or more hours rated lamp life with 70% lumen maintenance
- Total Lumens:
200 Watts clear: 11,120 prismatic: 9,636
- Constant Current
- 120-277V, 50/60Hz or 347/480V, 60Hz
- Up to 180 LEDs
- Line Transient Protection: 4 KV line to line, 2 KV line to ground
- Standard fixture suitable for freezer applications
- Fixture suitable for -40°C (-40°F) to +25°C (+77°F) ambient temperature

Certifications

- Nema Type 4X
- UL1598 & 8750
- CUL
- NSF Approved
- Enclosed and Gasketed
- Tested to LM79 & LM80 standards
- Hose down tested

Standard Materials

- Continuously welded aluminum construction
- FDA accepted powder coated finish
- Stainless steel hardware
- Extruded silicone lens frame gasket
- Hinged reflector assembly

WFH Series LED

Catalog Number Logic

WFH 175-24-4S-CA-U-DH

①

②

③

④

⑤

⑥

⑦

①

BASIC SERIES

WFH LED Hose-Down High Bay
NEMA 4X
UL1598 Wet Locations
CUL
Wash Down Rated
Hose Down Tested to 1200psi
Fire Hose Tested at 65gpm
NSF Certified Food Equipment

②

LED MAXIMUM SYSTEM WATTAGE

175 = 200 Watt (2 X 4) 180 LEDs

③

NOMINAL LUMINAIRE SIZE

24 = 2 x 4 Foot

④

NUMBER OF LIGHT STRIPS

4S = 4 Strips

⑤

LENS TYPE

CA = Clear Acrylic
PA = Prismatic Acrylic

⑥

VOLTAGE/FREQUENCY

U = 120 thru 277V 50/60 HZ
N = 347 thru 480V 60 HZ

⑦

MOUNTING

DH = Dual Hub 1/2 in. NPT
SH = Single Hub 3/4 in. NPT

Catalog logic is for explaining number structure only. Not all combinations are possible. Consult Factory